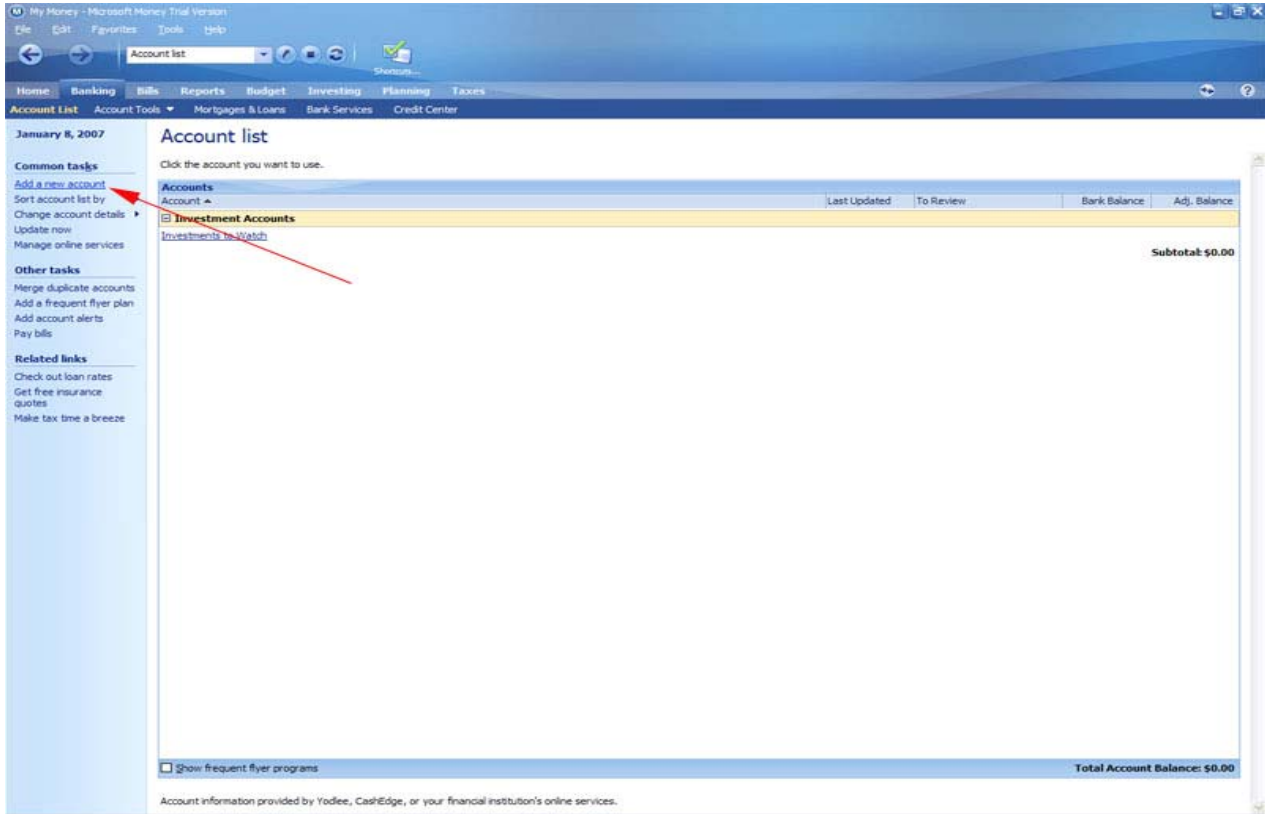


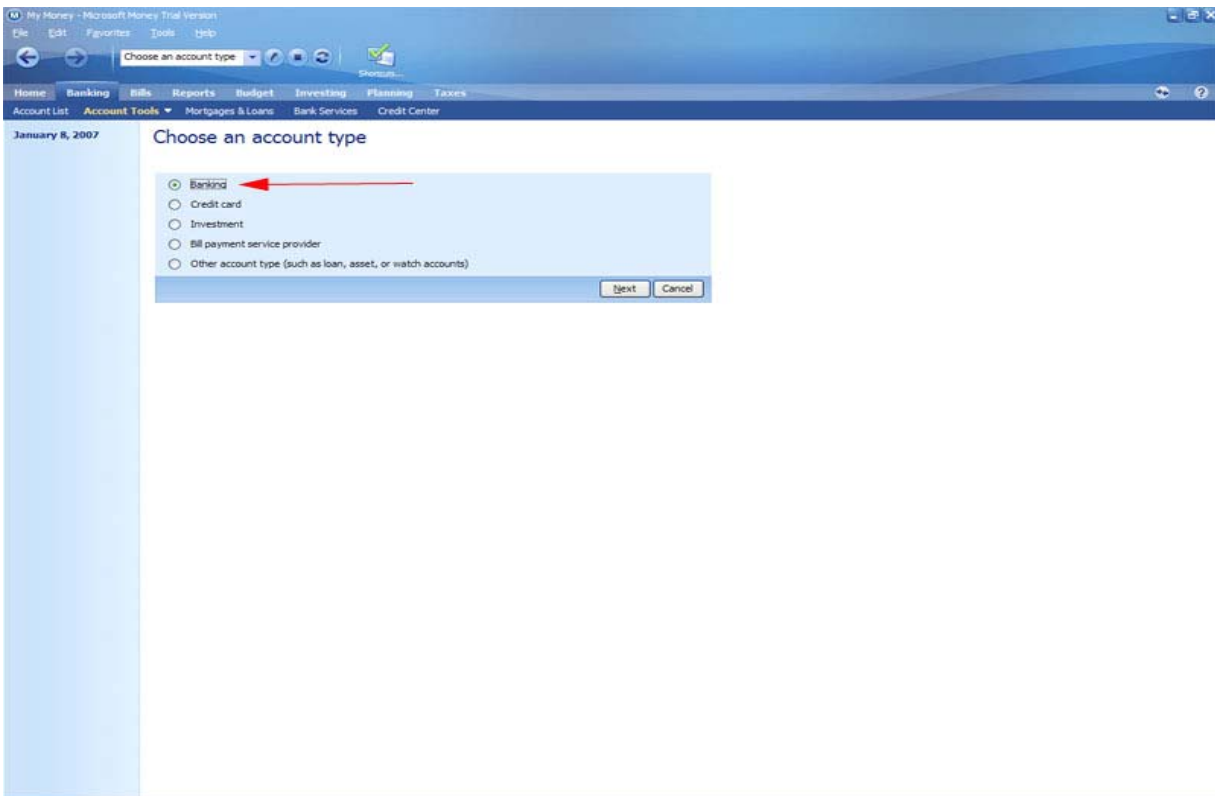
# Microsoft Money Direct Connect Instructions

1.



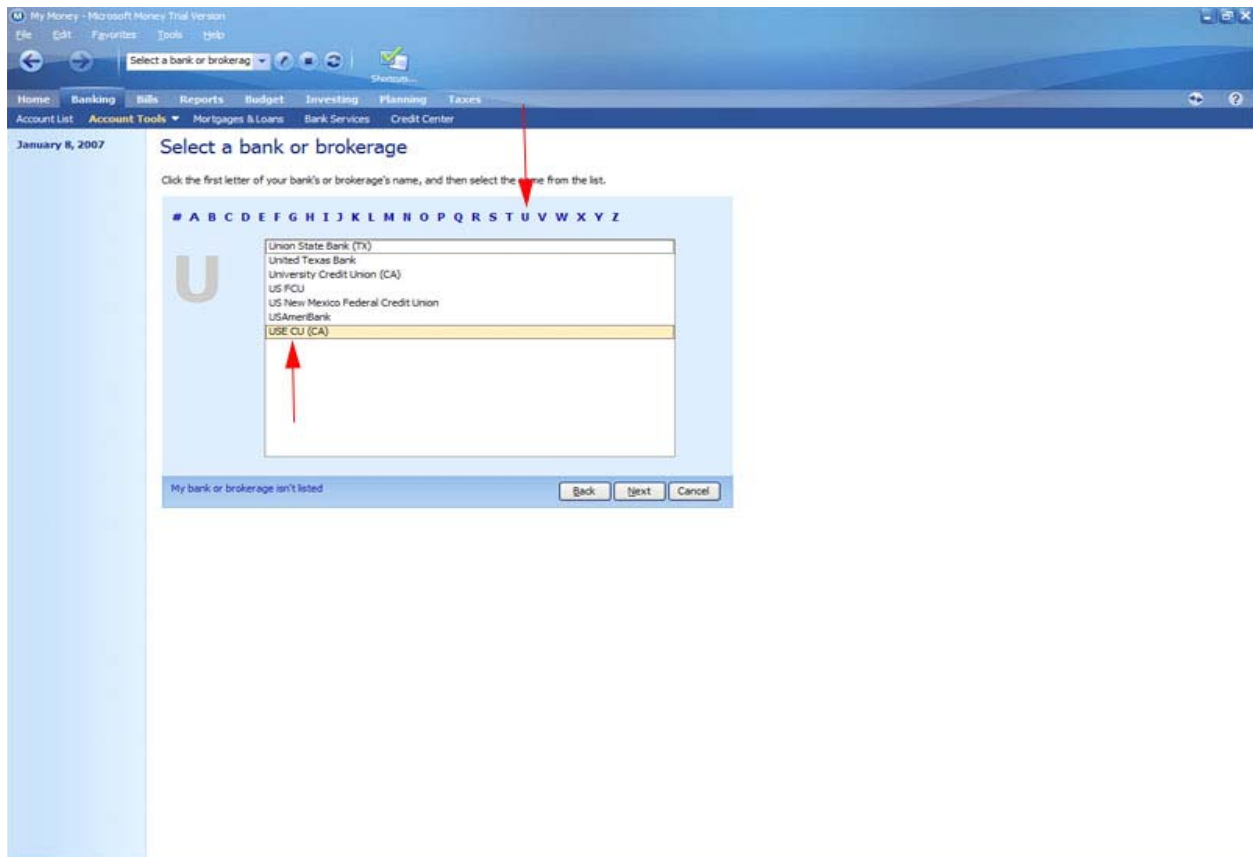
In Microsoft Money - select "Add a new account."

2.



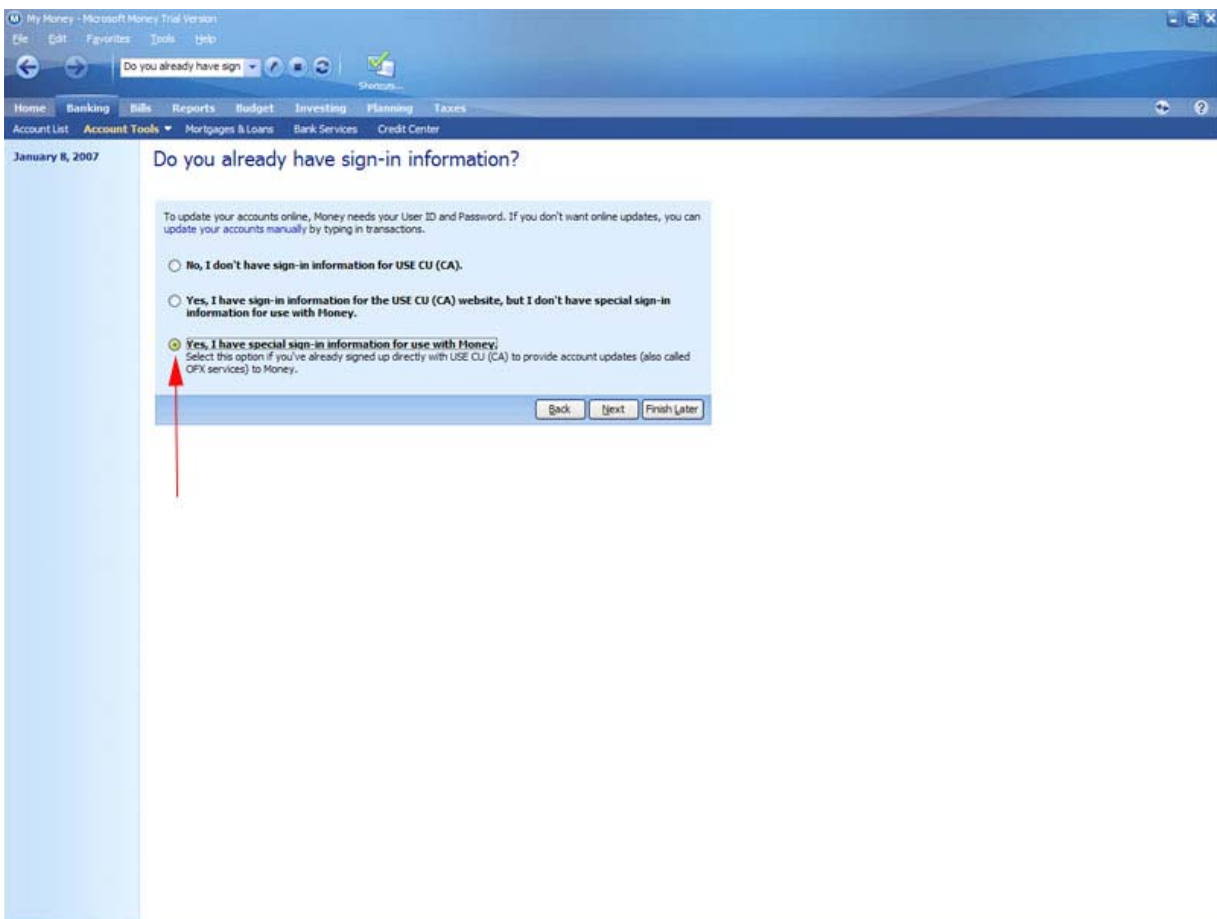
Choose "Banking" as the account type.

3.



Select "U" from the list and then choose "USE CU (CA)" from the list and click "Next."

4.



Select "Yes, I have special sign-in information for use with Money" if you have already contacted USE Credit Union for you Microsoft Money PIN. If you have not already contacted USE, select the 2<sup>nd</sup> option.

5.

The screenshot shows the 'Enter your bank or brokerage sign-in information' screen in Microsoft Money. The page title is 'Enter your bank or brokerage sign-in information'. Below the title, there is a message: 'To set up automatic updates, enter the sign-in information you received from USE CU (CA) when you signed up to use Money online services with USE CU (CA)'. There are two input fields: 'User ID:' with the value '123456' and 'Password:' with masked characters '\*\*\*\*\*'. Red arrows point from the text 'USE Member Number' to the User ID field and from 'PIN given by USE' to the Password field. Below the fields, there is a note: 'Your Password must be 4 to 8 characters long.' There are two checkboxes: 'Remember this password' (checked) and 'Advanced Account Setup More Details...' (unchecked). At the bottom, there is a link 'View the Microsoft Money Privacy Statement' and three buttons: 'Back', 'Next', and 'Finish Later'.

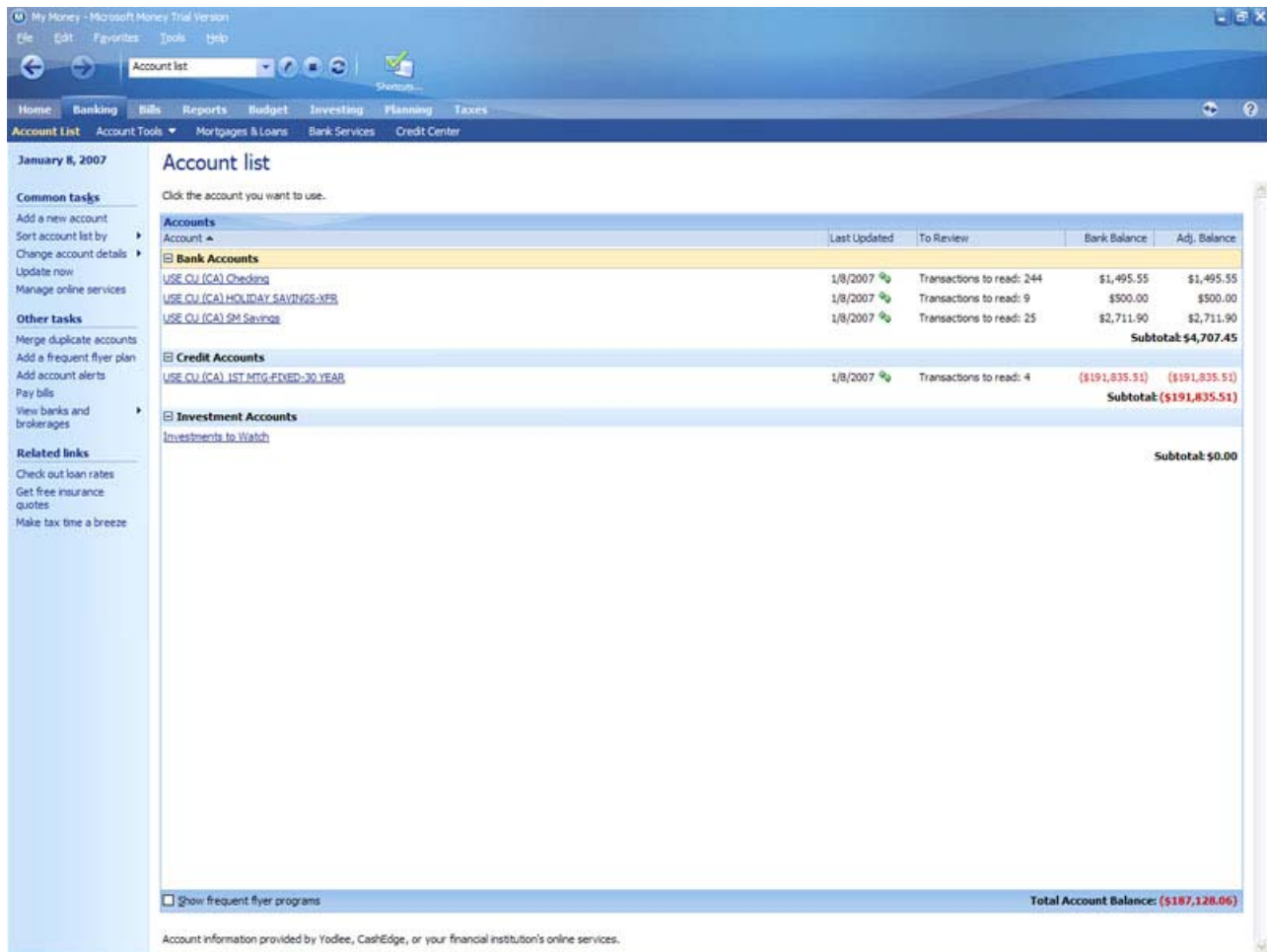
Enter your USE Credit Union Member Number as the User ID, and the Microsoft Money PIN given by USE Credit Union as the password.

6.

The screenshot shows the 'Choose account update settings' screen in Microsoft Money. The page title is 'Choose account update settings'. Below the title, there is a message: 'Decide how much historical information Money should retrieve from your bank, and how often you want your accounts automatically updated.' There are two sections. The first section is 'How many days of past transaction information do you want to include for your accounts?'. It has two radio buttons: 'Include:' (selected) and 'Don't include my previous transactions'. The 'Include:' radio button is followed by a dropdown menu showing 'Last 60 days'. The second section is 'After my account is set up, automatically update my information:'. It has a dropdown menu showing 'Every day'. At the bottom, there are three buttons: 'Back', 'Next', and 'Finish Later'.

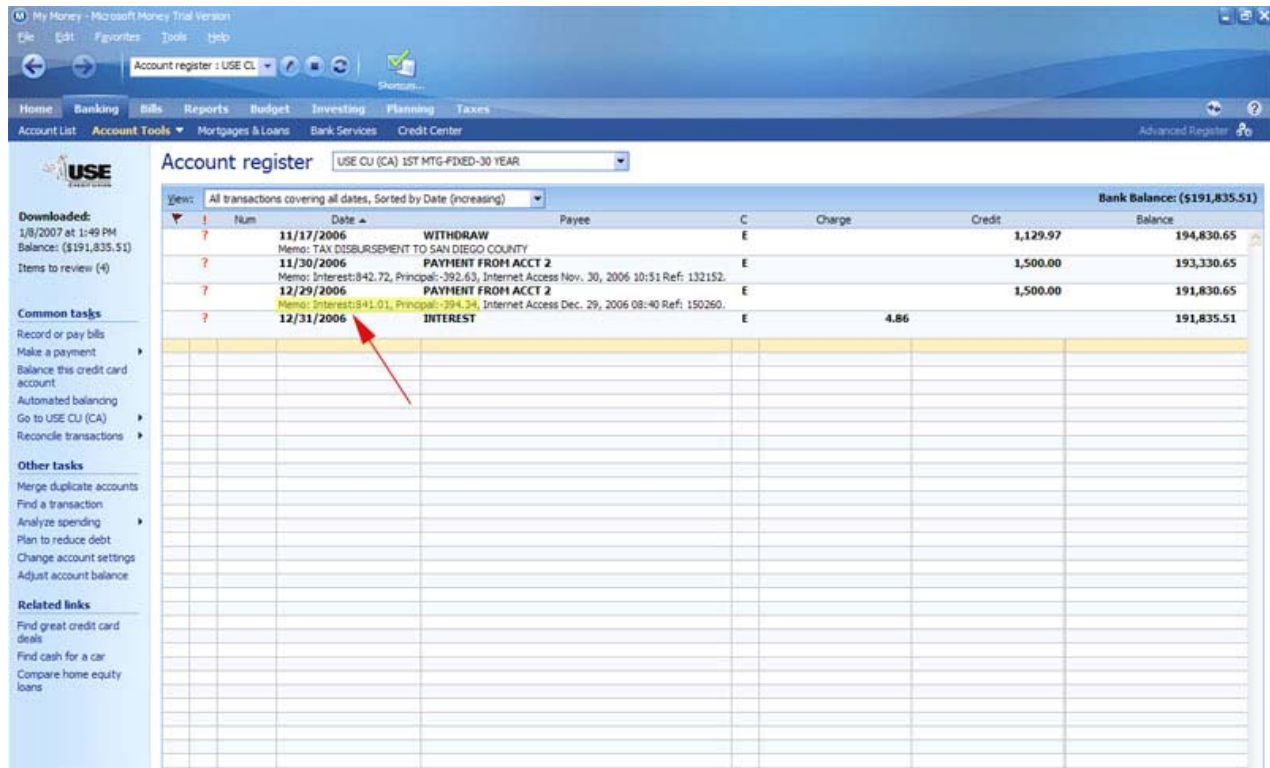
Choose the settings you prefer for the new account.

7.



Your USE Accounts will then appear in your account list. Any Auto Loans, Mortgage, or Lines of Credit will appear under "Credit Accounts."

8.



You will be able to see the Interest and Principal paid on each loan payment.